



**FALCON**  
Solution Ltd

Green & Sustainable Solution for  
Industrial, Commercial &  
Residential Flooring System.

## OUR SERVICES

- » PU Flooring Solution
- » Epoxy Flooring Solution (SLE)
- » Epoxy/PU Car Parking Solution
- » Self Leveling Epoxy Flooring Solution
- » Metallic Epoxy Flooring Solution
- » Epoxy Wall Coating and Paints
- » 3D Epoxy Flooring Solution
- » Fair Face Plaster
- » Polished Concrete
- » Waterproofing Solution
- » Floor Hardener Solution
- » Expansion Joint Work
- » ETP Protective Coating
- » Damp Proofing Solution
- » Vinyl Flooring Solution
- » Constructions Chemicals
- » Commercial & Residential Decorative Flooring
- » All types of Construction Works



call us now



**+88 01744 79 88 65**  
**+88 01847 31 34 70**  
**+88 01680 39 64 12**

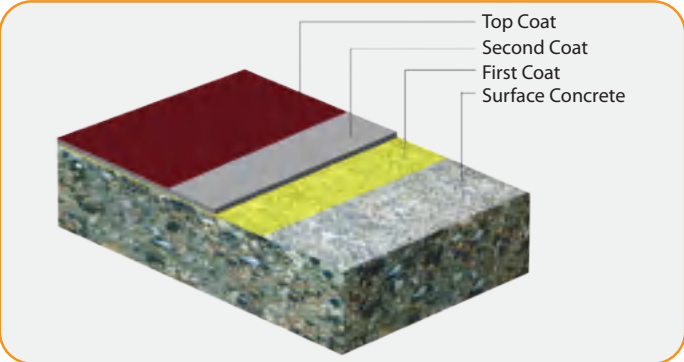


Follow us

[www.falconsolutionbd.com](http://www.falconsolutionbd.com)

# Polyurethane Industrial Floor

Polyurethane flooring also known as PU flooring, PU products have been designed for use in environments where high resistance to abrasion impact and chemical resistance is required. They are also suitable for use in wet process conditions. In addition, polyurethane can be used in areas subjected to thermal shock. Is used in both commercial and domestic environments. Typical areas of use include food processing areas, drink and beverage production areas, dairy processing and pharmaceutical, Textile & Garments. They provide a quality, cost effective alternative to tiling systems. In general, polyurethane can be used in the temperature range of -62°C to 93°C (-80°F to 200°F). Special formulations can extend polyurethane's performance reach to as high as 150°C (300°F).



Falcon Solution have High skill and trained application team and Civil engineers for projects super-visor. We are working with PU Flooring from 15 years, almost maximum multinational and top national company already our regular client. We are regular trained our application team for excellence. Our product average thickness 2-6 mm and various for customized floors as per client requirement.

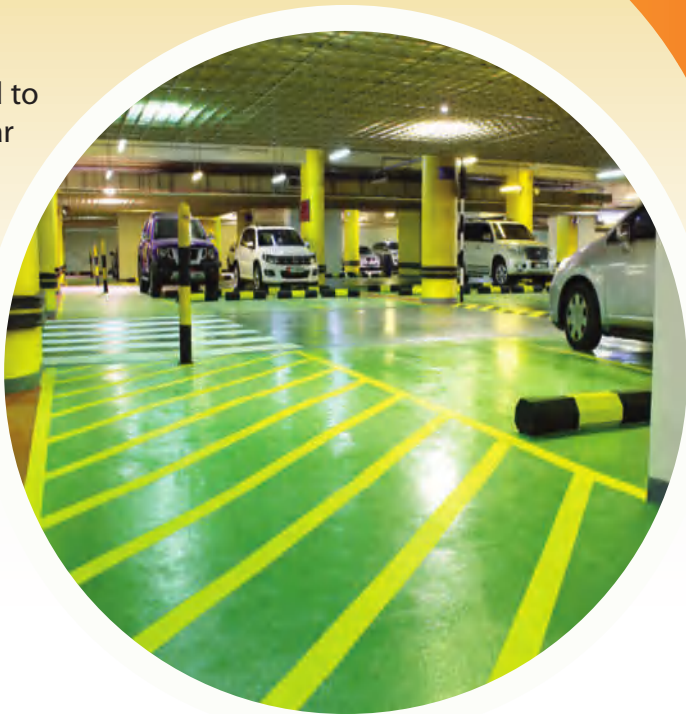
- Benefits:**
- Solvent Free, Hygienic & Food Grade
  - High Temperature Resistant
  - Long Lasting & Economical
  - Slip Resistant & Easy to Clean
  - Antistatic & Anti Corrosive
  - Very High Chemical Resistance
  - High Abrasion Resistance
  - Impact and Pressure Resistant
  - Ensures Complete Satisfaction
  - Durable, Tough Impervious
  - Antistatic Anti-Corrosive

- Uses Area:**
- Hospitals & Pharmaceuticals
  - Beverages & Food Processing
  - Engineering & Chemicals
  - Hotel, Kitchen & Cafeteri
  - Garments, Textile & Spinning
  - Knitting & Dyeing
  - Warehouses & Stores
  - Salt & Acid Areas
  - Any Kinds of Heavy Load Areas
  - Any Kinds of Industries

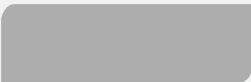


# PU Flooring for Car Parking

PU car park protection systems have been designed to meet contemporary requirements for upmarket car park environments, helping to enhance visual appearance, reduce noise from tyre squeal and prevent water ingress into the concrete structure. In addition, PU has a highly accredited fire rating and is available in a wide-range of attractive colors and finishes - with the option to create bright demarcation lines and signage, which help to regulate traffic movement and leave a welcoming impression on vehicle/parking users.



## PU Floor Color Chart



Light Grey



Steel Grey



Dark Green



Light Blue



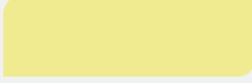
Light Green



Dark Blue



Brick Red



Cream



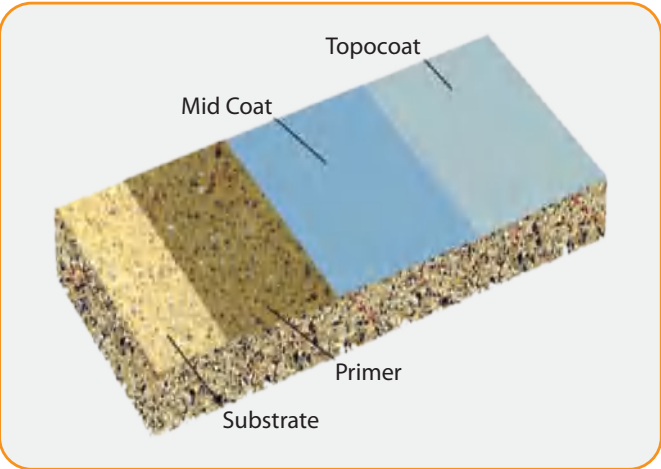
# Polyurethane Sports Flooring

Polyurethane sports floorings are well known for their top quality for all kind of different sports in all possible climates all over the globe. The excellent slip and wear resistance make the PU-Sport systems the right choice for many athletes for professional sports as well as for recreational sports. EPI polyurethane sports floorings are well known for their top quality for all kind of different sports in all possible climates all over the globe. The excellent slip and wear resistance make the PU-Sport systems the right choice for many athletes for professional sports as well as for recreational sports.



# Epoxy Flooring System

Epoxy is a term that's come to represent a class of materials and the act of using those materials. Epoxy flooring is made up of 2 main parts - resin and hardener. When mixed together, the resin and hardener chemically react to form a rigid plastic material. The final material is strong, durable, resistant, and bonds extremely well to most base layers. Epoxy floors are so strong that they're often used in heavy traffic areas such as industrial environments, hospitals, or sports facilities.



This two or three coat floor coating system provides a cleanable, long wearing surface. An epoxy primer coat, with optional intermediate high build epoxy coat, and polyurethane top coat. Available in an attractive high gloss or satin finish. A light glass bead texture provides ease of cleaning, and an anti slip surface. This can serve as cost effective alternative to Puma-Crete, for budget conscious buyers. However, if concrete is in good condition, and heavy impact or heavy traffic is not expected, this system provides everything that you need!

- Benefits:**
  - Low odor during application
  - Smooth & Anti-Slip Surface
  - Seamless & High Gloss
  - Light Chemicals Resistant
  - Hard wearing & Long lasting
  - Hygienic & Importable
  - Non-Tainting
  - Durable, Tough & Impervious
  - Attractive Orange Finish
  - Increased Abrasion resistant

- Uses Area:**
  - Pharmaceuticals & Hospitals
  - Light Load Areas
  - Residential Areas
  - Commercial Areas
  - Schools & Offices
  - Laboratories
  - Dry Process Area
  - Packing/ Bottling Area
  - Storage Area
  - Any Kinds of Industries

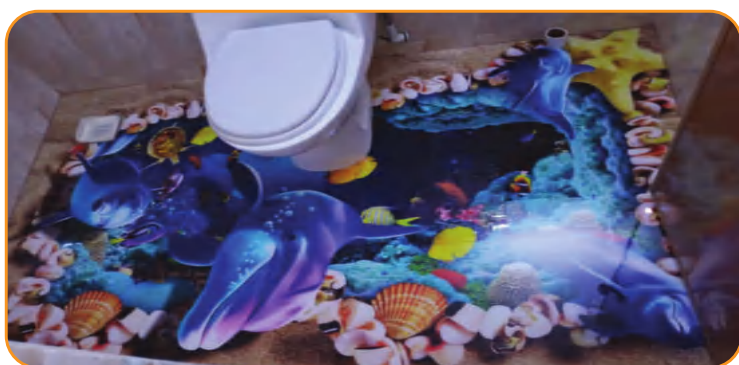


## 3D Epoxy Flooring

3D epoxy flooring is a state-of-the-art technology introduced to give floors an exclusive and unique design. ... This is then treated with a transparent two-component epoxy or polyurethane to give the perfect image depth. A level of protective varnish is the final step.

Epoxy 3D Floor is gaining increasing popularity. Epoxy 3D floor has been used more and more in shopping malls, halls, offices, homes and apartments due to its creativity and high performance. This is the latest fad in the fancy floor world.

3D flooring is a wonderful revival of conventional interior, harmonious combination of new technology and comfort. Dreaming of this type of flooring? now we will help you to apply your 3D floor designs yourself in your home.



## Epoxy Garage Floor Coating

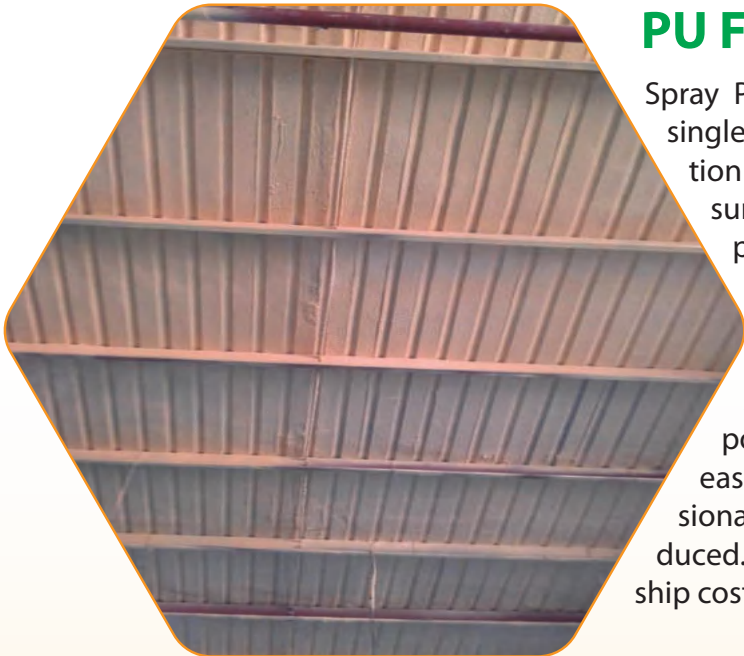
We will start by ending some confusion about epoxy right now. Paint for garage floors is a latex acrylic product. Some paints will have a small percentage of epoxy added to the mix to make it more durable than standard paint, but it's still paint, these are known as epoxy paints or 1-part epoxy Paint. Epoxy is an actual thermosetting resin that is applied as a coating. It is formed when you mix one-part epoxide resin with one-part polyamine hardener. The hardener acts as a catalyst and is what gives epoxy its strength.

Garage floor paints give your floor a new look while protecting its surface from damages, oil spills, and moisture. Garage floor epoxy coatings, including the Colored Epoxies Clear Epoxy Resin Coating, use a chemical reaction to harden and create a long-lasting and protective finish.



# Epoxy Wall Coating and Paint

In many industrial, institutional, and commercial settings, maintaining walls can be a costly and involved process. Chipping paint, water damage, chemical exposure, and general wear and tear make upkeep a hassle. Oftentimes, time spent on wall repairs leads to disruptions in workflow and can leave rooms unusable for periods at a time in commercial settings. While most people are aware that epoxy coatings are a great choice for creating durable, low-maintenance flooring, many do not know that epoxy works just as well on walls. Epoxy coating for walls, is a two component, 100% solids epoxy Hi-Build epoxy wall coating used for high indoor traffic areas where abrasion resistance is required; for protection against mild corrosion; and as a decorative waterproof coating for walls, tanks, etc.



# PU Foam Spray

Spray Polyurethane Foam is a polyurethane (PU) based, single component, very qualified heat and sound insulation product that can be applied by being sprayed on surfaces through its special application device. The propellant in the can sprays the chemical component to surfaces through application gun. This composition rapidly cures, expands and hardens with the moisture in the air, Spray Polyurethane Foam, having only double component equivalents up until today, can be rapidly and easily applied by amateur users as well as the professionals, thanks to its single component version introduced. Transport, warehousing, application and workmanship costs are quite lower than other equivalents.



# Commercial & Residential Decorative Flooring

Decorative Concrete Floors has been extremely innovative when it comes to decorative concrete and flooring solutions. We are one of the best in epoxy flooring, epoxy resin flooring or decorative epoxy floors. The combination of our experience and expertise helps us to stand out from our competitors when it comes to decorative epoxy floors for residential, commercial or industrial purpose. We have handled projects ranging from small-scale to large commercial projects with specialization teams for concrete polishing, grinding, cleaning, coating and sealing.



## Benefits

### Attractive:

Decorative Finish to transform dull commercial environments.

### Resistant:

Excellent resistance to chemicals, and general wear and tear.

### Solvent Free & Low Odor:

Improved air quality during installation and beyond.

### Reduces Noise:

Minimizes unwanted noise from footsteps in busy commercial spaces.

### UV Stable:

100% UV light stable, Prevents from yellowing effect.

# Vinyl Flooring System

Vinyl flooring is a reasonably new type of flooring method which is primarily used in institutional and commercial applications. It is a type of resilient flooring that uses vinyl instead of plastic, rubber, linoleum, PVC and other types of artificial composite floors.

**Vinyl floors can be installed in two ways:**

1) **Vinyl Sheets:** Sheet comes in different measurements of 6 to 12 different widths in prepared rolls or cuts to the required measurements.

2) **Vinyl Tiles:** Tiles are available in the dimension of twelve inches to eighteen-inch squares. The tiles that come with self-adhesive are easy to install compared to the other.

Vinyl flooring has grown in popularity over the past couple of decades and from just commercial use, it has also been used for personal uses.

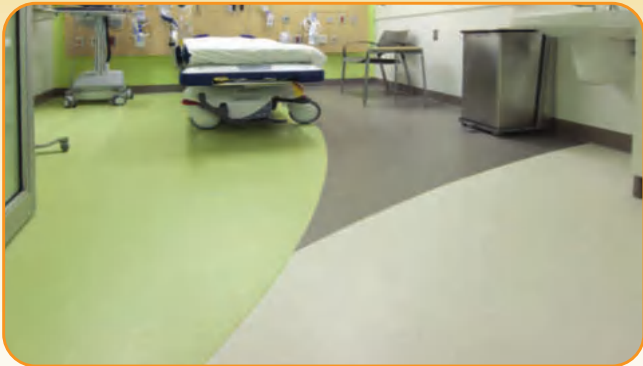
So, if you are planning to get you home floored with vinyl, here are a few advantages that would really make you go for vinyl flooring.



# Homogeneous PVC Floor

The environmental protection of floor materials is critical to the medical field. In order to truly create a safe and environmentally friendly medical floor, floor materials that meet the medical environment must be used. The biggest advantage of homogeneous flooring is safety, environmental protection, low-carbon ecology, which is very suitable for the use of floors in the medical field. It uses 100% natural raw materials, does not add any recycled materials, and adheres to the concept of safe and healthy production. With the gradual popularity of environmental protection concepts, more professionals have begun to generally agree with the low-carbon environmental performance of homogeneous flooring, and it has also become a special elastic floor material in the medical field.

Homogeneous flooring surface has super anti-pollution and anti-chemical properties, and surface anti-bacterial process treatment, providing permanent sterilization and anti-bacterial treatment, to prevent the proliferation of microorganisms in the floor. For the hospital ground iodine, bloodstains, etc., with good protection, can quickly clean the stains, to avoid leaving marks on the ground. The homogeneous flooring of the hospital that uses roll material mostly, the operating room that the hygiene condition of the hospital requests high, can remove dead angle with roll material shop, assure sanitation is clean.



### Uses Area:

- \* Hospitals
- \* Laboratories
- \* Offices
- \* Airports
- \* Libraries
- \* Schools

## Antibacterial and Antiskidding, Wearproof and Antifouling Environmental Protection



# Fair Face Plaster

Modern architecture is unimaginable without fair-faced concrete. For decades priority was given to the unique load-bearing properties and unrivaled cost/performance ratio as a structural building material. It is only in recent years that the marvelous design versatility and the creation of many different finishes have also come to the fore. Fair face plaster is a familiar name in building construction but actually, it's not veneered or plastered. Rather it's the concrete appearance that can make a concrete surface decorative. If you want to meet different aesthetic requirements exactly as you like Fair face Solution will surely be the wisest option for you. there are lots of services in fair face solution. Like Fair Face Plaster, Skim Coating, Water Repellants Coating.

### Benefits:

- Improves adhesion, working time and durability of cement and gypsum-based plaster to the surface such as brute concrete, wall, ceilings.
- Water based, odorless and safely used in interiors.
- Prevents quick water loss of concrete which applied on highly absorbent surfaces.

### Uses Area:

- Interior areas for horizontal, vertical and ceiling applications.
- Used as primer on ceiling plasters
- Apply to brute concrete surface before cement and gypsum-based plaster applications
- Used for improving adhesion, working time and workability to plasters
- Any Kinds of Industries



# Polished Concrete

Floor Polishing is a sophisticated method of the present are. Through the method the normal stone floor is transformed into a mirror-like floor with the help of a high technology machine, it is known as floor finishing. This is mainly discovered by America, Japan, Europe, Germany and China Technologies. The word conquers now in Bangladesh. We are the first to bring this technology by Bangladesh.

It is a widely known fact that floor polishing is an essential part of any property's overall image. A well-polished floor sends a positive message to all who visit, whilst making a vital contribution to the overall decor and interior design of a property.



## One Application for Semi-permanent Life of Product

Eco-friend Concrete Granite works in an incorporated system with concrete so it becomes semi-permanent. It's penetrable properties have it function along with the concrete's live after just one application whereas other hotero hardeners lose their adhesion.

**Water Repellency Effect :** Eco-friend Concrete Granite is excellent with it's pore filling properties of silicate. The concretes' surface is sealed through silicates surface action to prevent water penetration and offers further protection from other Concrete Granite's and contamination.

**Anti-slip :** Eco-friend Concrete Granite doesn't change the concrete's properties but becomes integrated with it. This gives a glossy effect but practically it has almost the same anti-slip properties as concrete, this is hugely different from coatings such as epoxy.

**Ware Reduction :** As an additional effect from the surface hardening, the wear amount has been measured to be reduced by around 45%. Specimens were tested with a 300 Compression strength Semi-permanent Environmentally, friendly Flooring Polishing System.

**Glossy Effect :** Eco-friend Concrete Granite has a more glossy effect over time due to sealing and surface friction and it has no maintenance required but only wipe with Mop.

**Surface Hardening :**  
concrete to make

As silicate unites with calcium hydroxide in the an extra hard calcium silicate, it expects on the existing concrete's hardness increasing hardness by about 30-50% of existing concrete hardness within 3-24 hours after application of Eco-friend Concrete Granite.

**Carbonation Protection :**

Carbonation of the concrete, where the concrete loses it's alkali property, modifies calcium hydroxide, the catalyst of the carbonation into calcium silicate and at the same time stops the flow of carbon dioxide in the concrete by filling it's pores. It thus has a superior effect in the control of carbonation.

**Permanent Life by Protection**

**of Concrete :** Hardens concretes, Seals Concrete, External shock % friction resistance and restrains permeation of water, chlorine and CO2.



# What is Floor Polishing

F Floor Polishing is a sophisticated, innovative, economical and environmentally friendly process of mechanically grinding and polishing concrete utilizing industrial diamonds & impregnating hardeners. Through the method of the normal stone floor is transformed into a mirror-like floor with the help of a high technology machine, it is known as floor finishing. This is mainly discovered by America, Japan, Europe, Germany, Korea and China Technologies. The word conquers now in Bangladesh.



*Green & Sustainable Solution for Industrial, Commercial, Residential Flooring System*

## Polishing Where to make Floor

Floor Polishing is more applicable to those buildings which are more open than the buildings. Such as: Industrial, Commercial, Residential, Warehouses, Retail locations, Showrooms, Schools, University, Shopping Mall, Hotel & Restaurant, museums, and government buildings. The places in the industrial building that are done are office buildings, Warehouse, Knitting, Dyeing, Cutting, Sewing, Utility, Buildings, Chemicals, Boilers and Restaurants, Resort, Hospitals, Community centers, Residential Buildings and Parking places etc are located in the Commercial Buildings. Besides Mosaics, Granite and Marble floors used in the past can also be polished like a mirror.



# 100% Protection Against Concrete Dust Generation

Eco-friend Concrete Granite's penetrates into the concrete causing calcification between pores by uniting lime, clay, minerals, aluminum and silicate polymers to ultimately make the concrete structure the most stable and strong three-dimensional tetrahe CG on molecular structure. This makes the surface become totally hardened and fundamentally protects from dust generation.



## Polishing Floor Effectiveness

Since the polishing is done on the main floor, there is no risk of breaking the floor and cracking.

This place has no joints, it is a platform all the space.

Polishing floor costs less than tiles and mosaic floor.

Polishing floor stability is much higher than other floors.

Compared to tiles, mosaics and granite floor, polishing floor is more brighter than.

The ability to carry weight is more

Due to the use of chemical, concrete up to 7 inches has become more strong bonds.

Floor finishing helps reduce that extra weight.

Takes less time.

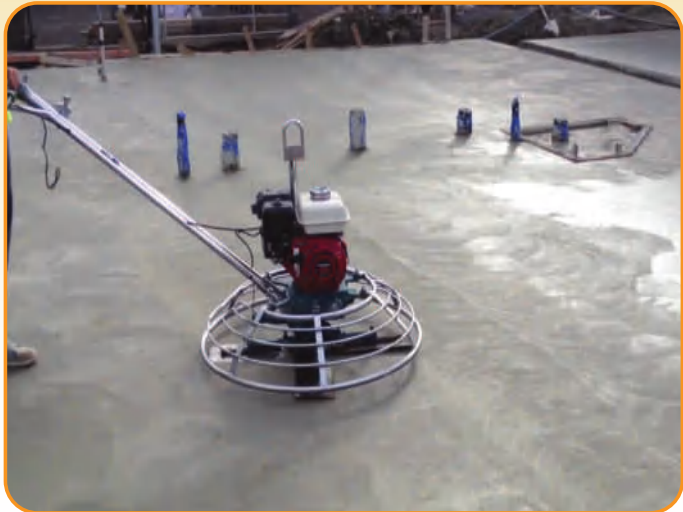
Heat and sound repellent.

There is damage to the floor to remove the furniture and machines.

# Floor Hardener

Offering floor hardener such as concrete floor hardener, metallic floor hardener, non-metallic floor hardener, liquid floor hardener, heavy duty metallic floor hardener, glossy liquid hardener, carboarded based non-metallic floor hardener and industrial floor hardener. LIQUI-HARD concrete densifier and chemical hardener compound is a proprietary, water-based, ready-to-use, clear silicate liquid, formulated with chemically reactive raw materials to harden and dustproof concrete. This process produces a substantially denser concrete surface with enhanced durability.

Falcon solution ltd provide all range of modern floor hardener as per customer needed. But we prefer metallic Floor Harder floor sustainable solution. We have our own machine for apply and its help client for their customized concrete application as per there in time with proper process. Also, we have 10 experienced applicator who apply floor hardener last 15 years here in Bangladesh.



### Benefits:

- Increases surface density and durability
- Non-metallic does not rust or stain
- Provides a hard, abrasion resistant surface
- Naturally slip resistant
- Forms monolithic bond with base concrete
- Easy and economical to apply
- Minimizes maintenance costs and labor

### Uses Area:

- Interior horizontal concrete surfaces
- Freshly poured or order, cured concrete
- Industrial, Commercial or warehouse floor
- Food preparation, storage and distribution
- Convention centers, Sports facilities
- Freezers, cold rooms, walk-in chillers
- Schools, hospitals, retail outlets
- And others area where needed
- Any Kinds of Industries



## Floor Hardener

All commercial, manufacturing, and warehouse floors require a high quality work surface providing long-term durability, high abrasion resistance, dustproofing, low permeability and safety. In most industrial applications dry shake floors have the best price/performance ratio when compared with alternative concrete treatments or finishes. The main characteristics and benefits provided by dry shake hardeners include: installation time saving, enhanced durability, improved traction safety, aesthetic options, and overall economy. Dry shakes can be produced from one type or combination of aggregates to achieve certain color and performance properties. Several factors such as service condition, durability, aesthetic and cost dictate the decision to choose a type of combination of aggregates for dry shake mixture.



# Waterproofing Solution

Waterproofing is the process of making an object or structure waterproof or water-resistant so that it remains relatively unaffected by water or resisting the ingress of water under specified conditions. Such items may be used in wet environments or under water to specified depths. Falcon solution deal with waterproofing last 6 years.

## Types of Waterproofing:

- Acrylic Waterproofing
- Cementitious Waterproofing
- Concrete Waterproofing
- Bentonite Waterproofing
- Liquid Membranes Waterproofing
- Torch-Applied Bituminous Membrane Waterproofing
- Self-Adhesive Bituminous Membrane Waterproofing

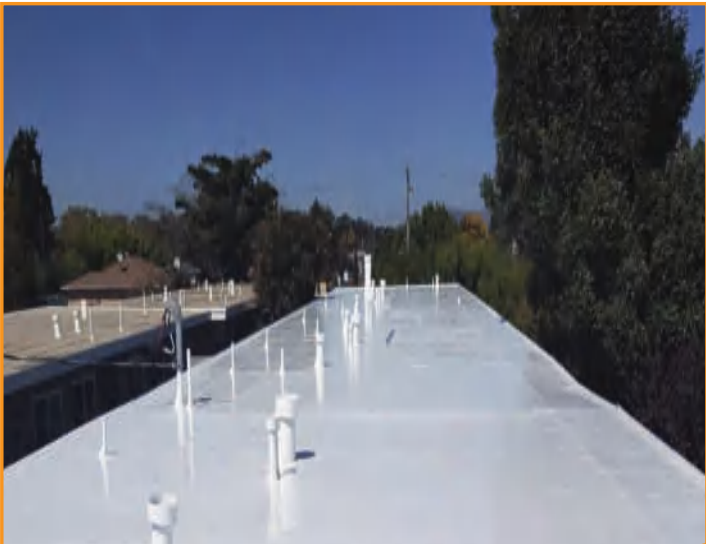
### Benefits:

- Protection of your surface/ building from the inside out
- Preservation of your building's condition and value,
- Continued comfort and safety for you and your family
- Prevention of possible water damage



### Uses Area:

- Basement Waterproofing
- Swimming Pool Waterproofing
- Water Tank Waterproofing
- Podium Waterproofing
- Terrace Waterproofing
- Exterior Walls Protection
- Industrial Flooring
- Any Kinds of Industries

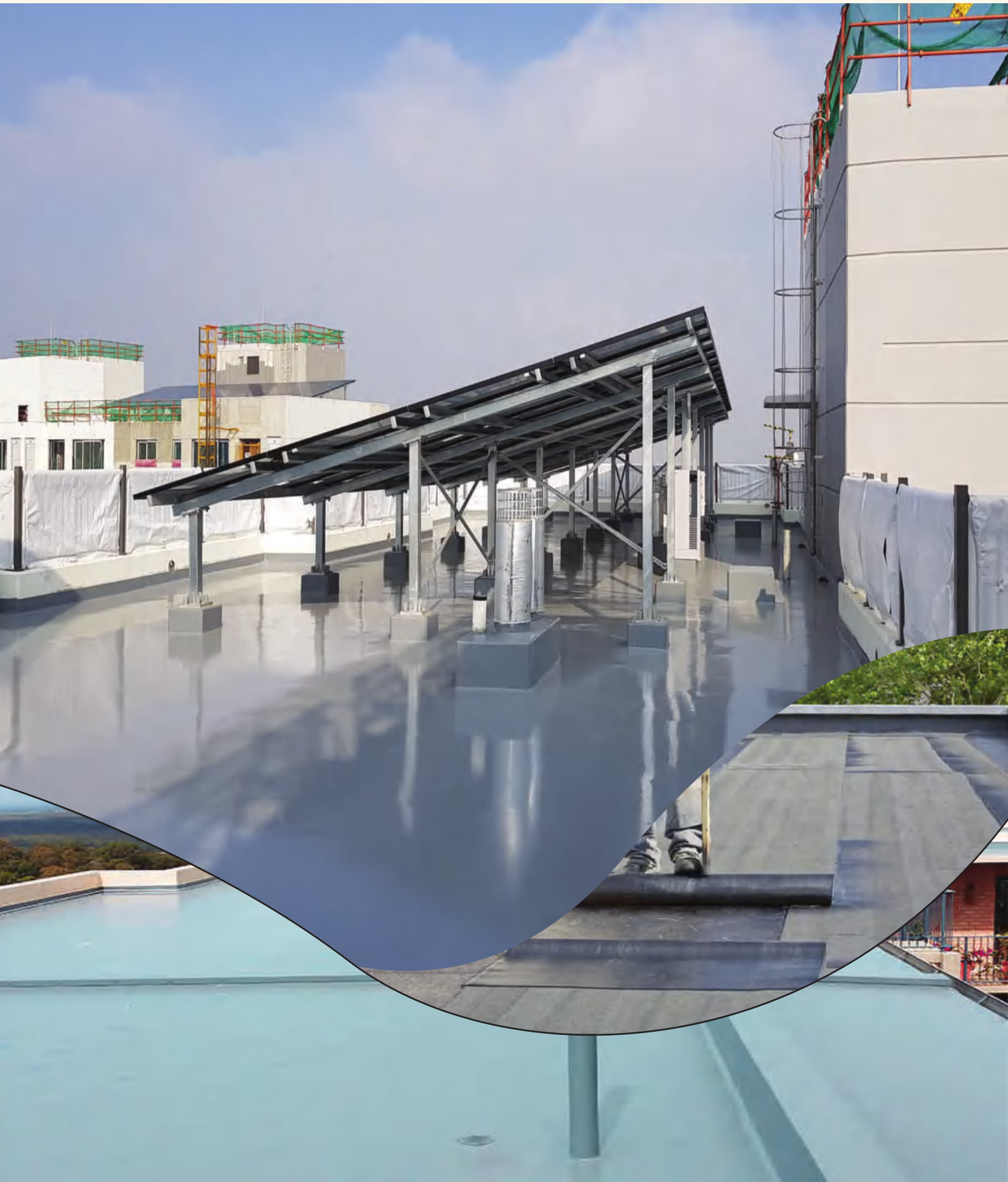


## Waterproofing Solution

Waterproofing is the formation of an impervious barrier over surfaces of foundations, roofs, walls, and other structural members. The function of the impermeable barrier is to prevent water penetrations. The building surfaces are made water-resistant and sometimes waterproof.

The utilization of liquid waterproofing membrane, cementitious materials, polyurethane liquid membrane, and bituminous material are common in the waterproofing of buildings.

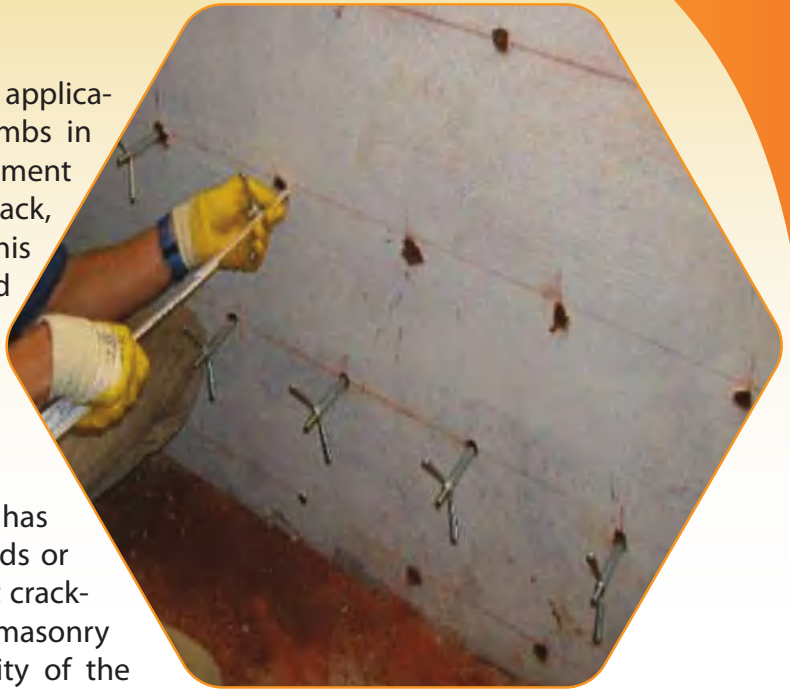
Waterproofing is necessary for the basement, walls, bathrooms, kitchen, balconies, decks, terrace or roofs, green roofs, water tanks, and swimming pools, etc.



## Injection Grouting

Injection grouting is a retrofitting technique of application of new material in cracks/voids/honeycombs in concrete surfaces. The system involves filling Cement slurry or waterproofing chemicals for reducing crack, voids, and honeycomb from the concrete. This process is adopted to repair damaged old concrete structural members and strengthen them. Grouting can be done in various methods but the injection method is adopted for accuracy and time-saving.

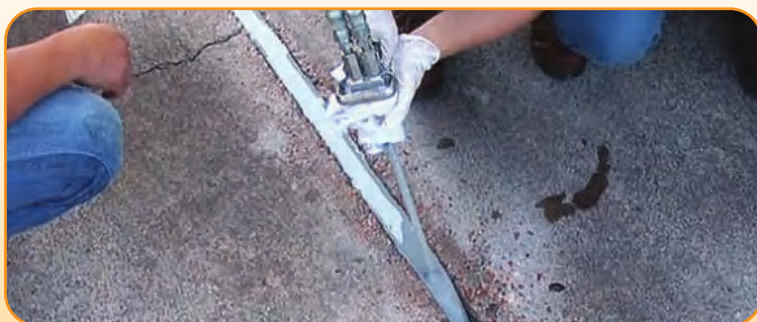
Grout is basically a flowable plastic material that has low shrinkage and is widely used for filling voids or gaps completely and will remain stable without cracking. The selection of the types of grout for the masonry repairing work depends upon the compatibility of the grout with the original material.



## Expansion Joint Work

An expansion joint or movement joint is an assembly designed to safely absorb the temperature-induced expansion and contraction of construction materials, to absorb vibration, to hold parts together, or to allow movement due to ground settlement or earthquakes. They are commonly found between sections of buildings, bridges, sidewalks, railway tracks, piping systems, ships, and other structures.

Building faces, concrete slabs, and pipelines expand and contract due to warming and cooling from seasonal variation, or due to other heat sources. Before expansion joint gaps were built into these structures, they would crack under the stress-induced. Falcon Solution Ltd providing best service for expansion joint work in Bangladesh as a best applicator as well as contractor with affordable price.



# Construction Chemicals

## Admixture

Set retarding concrete admixtures are used to delay the chemical reaction that takes place when the concrete starts the setting process. These types of concrete admixtures are commonly used to reduce the effect of high temperatures that could produce a faster initial setting of concrete. Set retarding admixtures are used in concrete pavement construction, allowing more time for finishing concrete pavements, reducing additional costs to place a new concrete batch plant on the job site and helps eliminate cold joints in concrete. Retarders can also be used to resist cracking due to form deflection that can occur when horizontal slabs are placed in sections. Most retarders also function as water reducers and may entrain some air in concrete.

## Epoxy Crack Injection

Epoxy crack injection (also referred to as epoxy injection) is an extremely effective and reliable concrete crack repair method, used exclusively for the repair of poured concrete foundation cracks, for the structural repair of same, to fix basement leaks, and to prevent poured concrete foundation cracks from leaking in the future. When used under the right conditions and when done properly by a trained injection technician, an epoxy concrete crack repair does not fail.

## Joint Sealant

Joint sealants are used to seal joints and openings (gaps) between two or more substrates, and are a critical component for building design and construction. The sealer's purpose is to prevent water, ice, and dirt from getting into the joint and to prevent intrusion from below the slab—including of radon. Concrete joint sealer will protect the joint from damage caused by heavy equipment being driven and/or rolled over the expansion joint, chipping and cracking the edges, which eventually leads to concrete joint failure.



## FALCON SOLUTION LTD

**Corporate Office :** Flat#4/6, House#1/5 Mizan Tower, Kallyanpur Bus Stand, Kallyanpur, Dhaka-1207, Bangladesh.

**Branch Office :** Meher Bhaban, 2<sup>nd</sup> Floor, Koibollodham, New Monsurabad Road, Post: Firoz Sha Colony, Thana: Akbar Sha, Chattogram, Bangladesh. (In Front of 09 no. Ward Council office, AK Khan).

**Phone :** +88 01744 79 88 65, +88 01847 31 34 70, +88 01680 39 64 12.

**E-mail :** falconsolution18@gmail.com, info@falconsolutionbd.com

**Web :** falconsolutionbd.com

